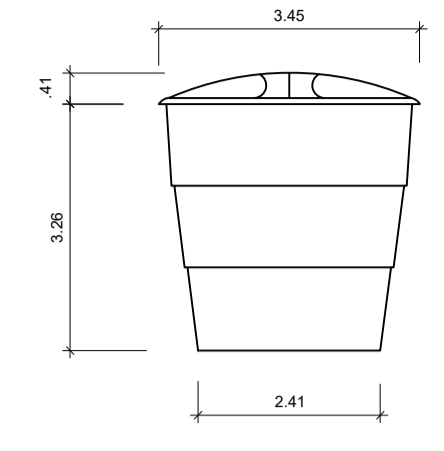
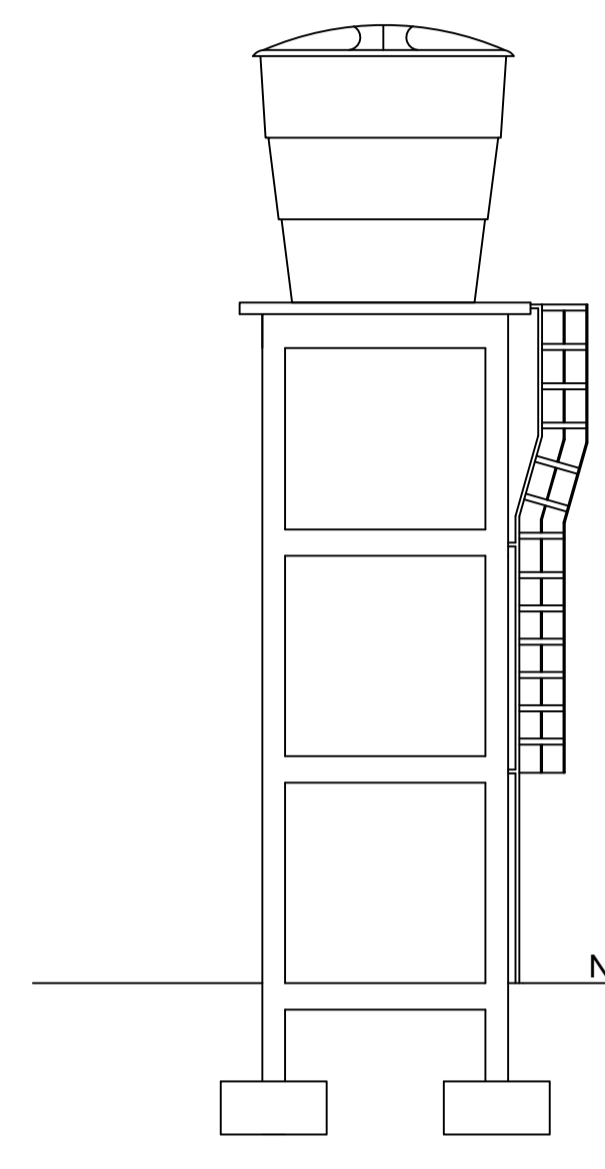


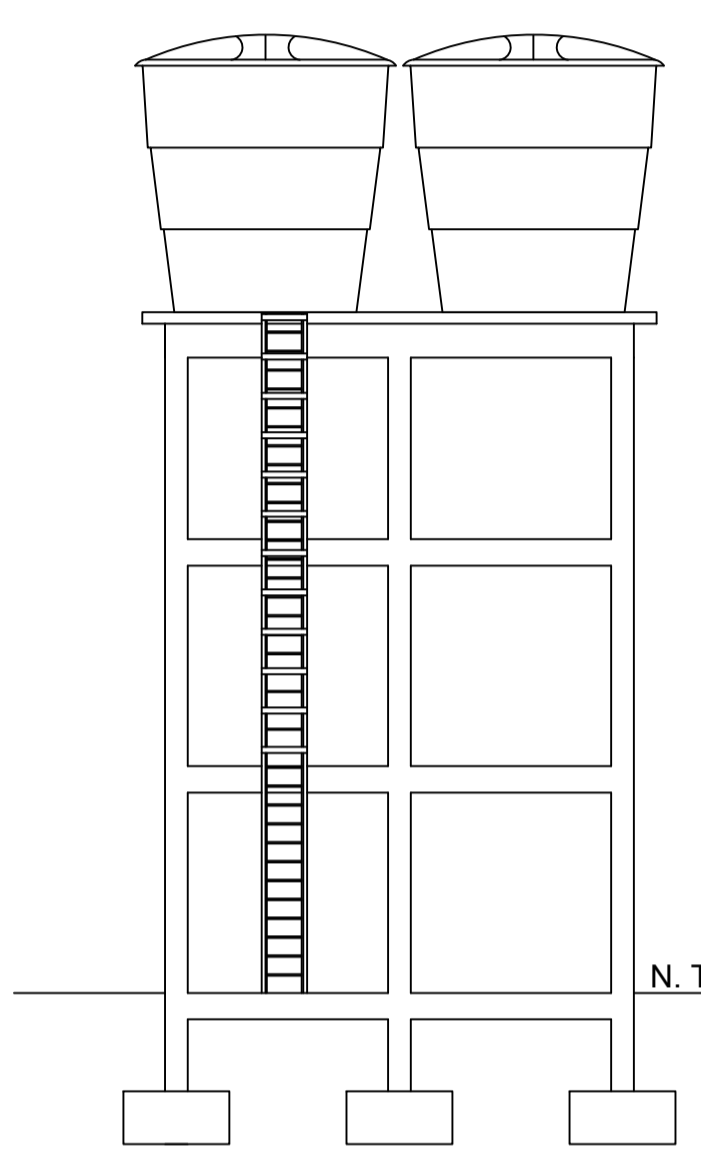
PLANTA BAIXA  
Esc:1/100



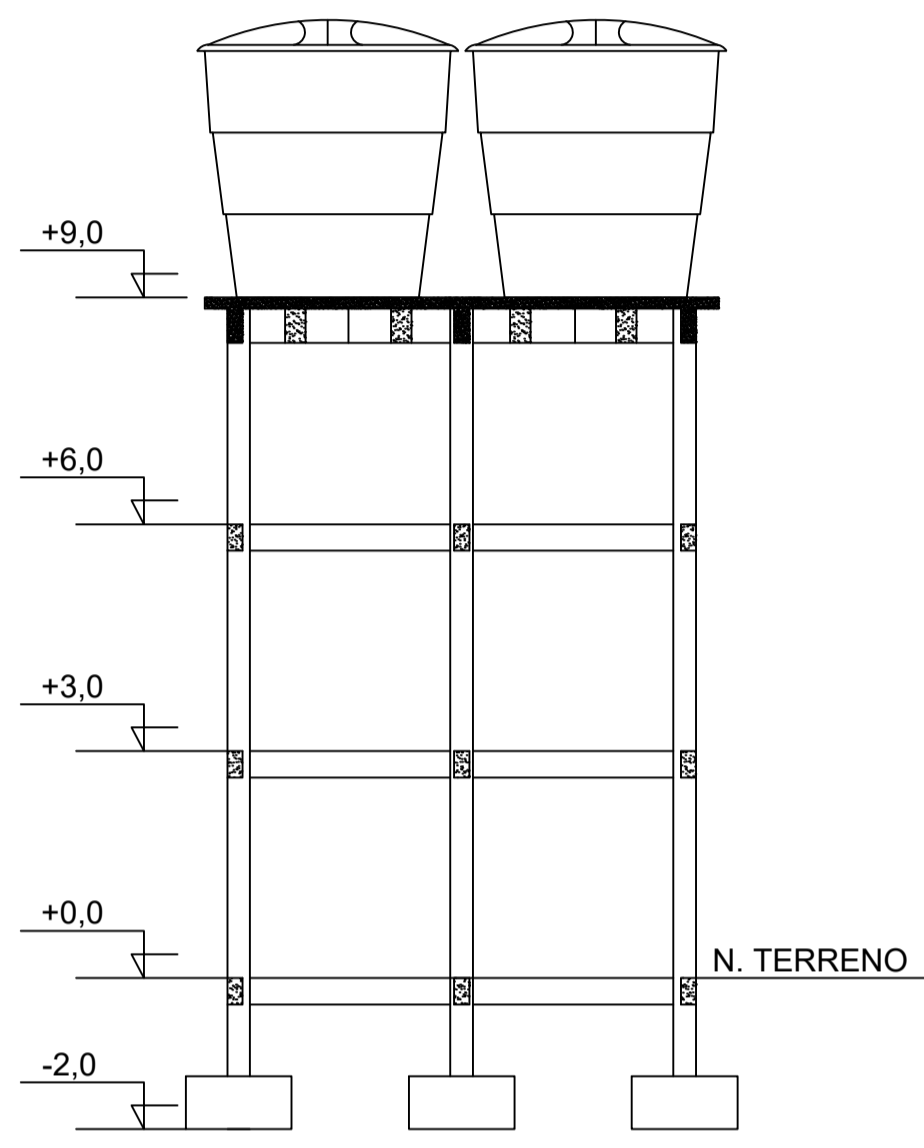
CAIXA D'ÁGUA  
Esc:1/100



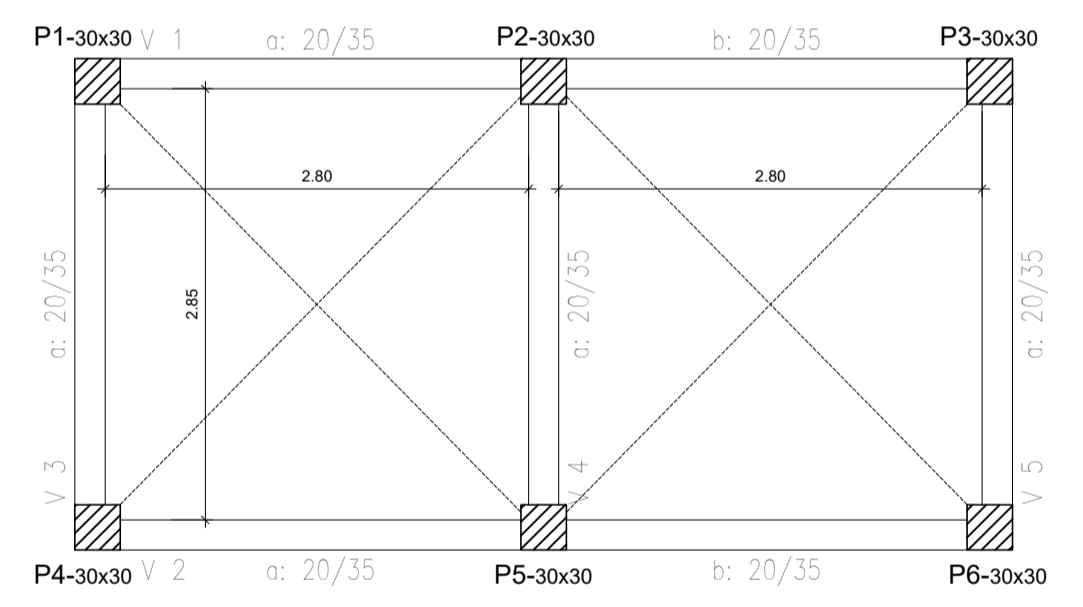
VISTA A  
Esc:1/50



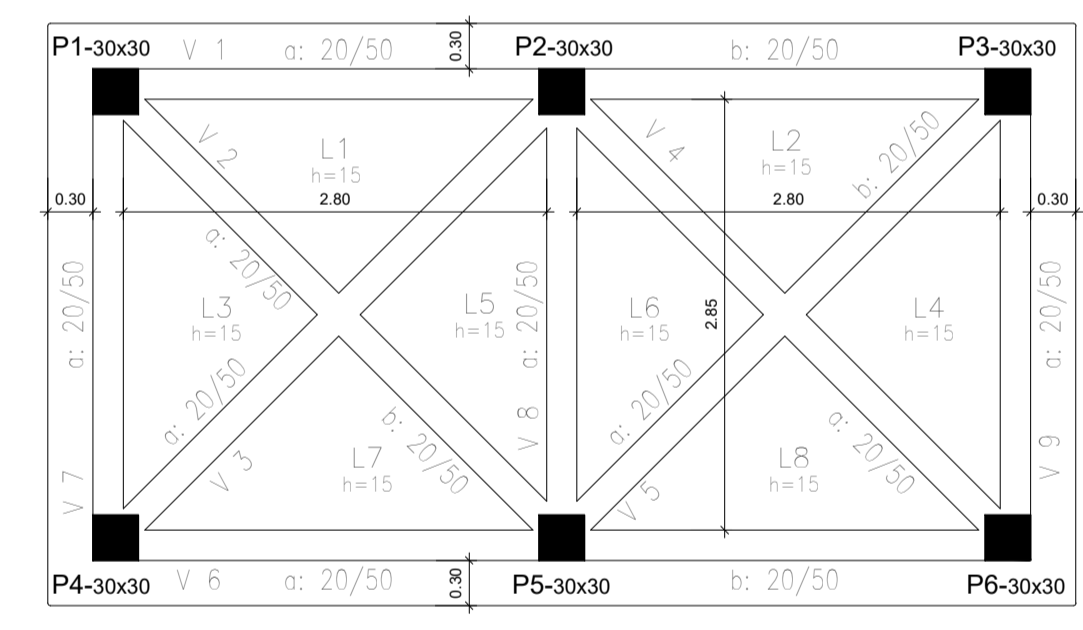
VISTA B  
Esc:1/50



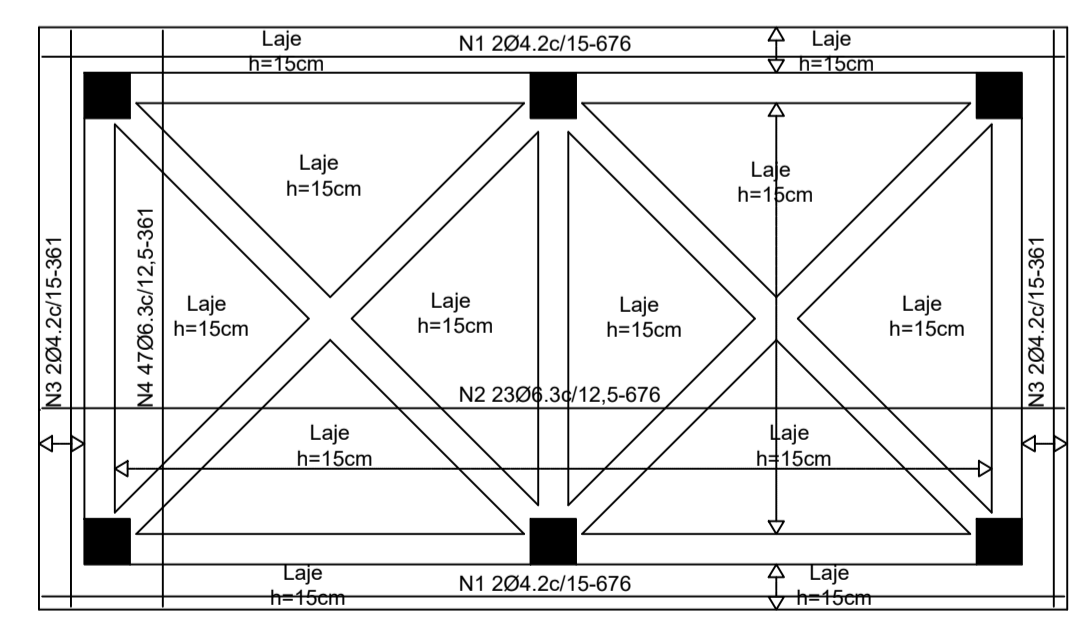
CORTE AA  
Esc:1/100



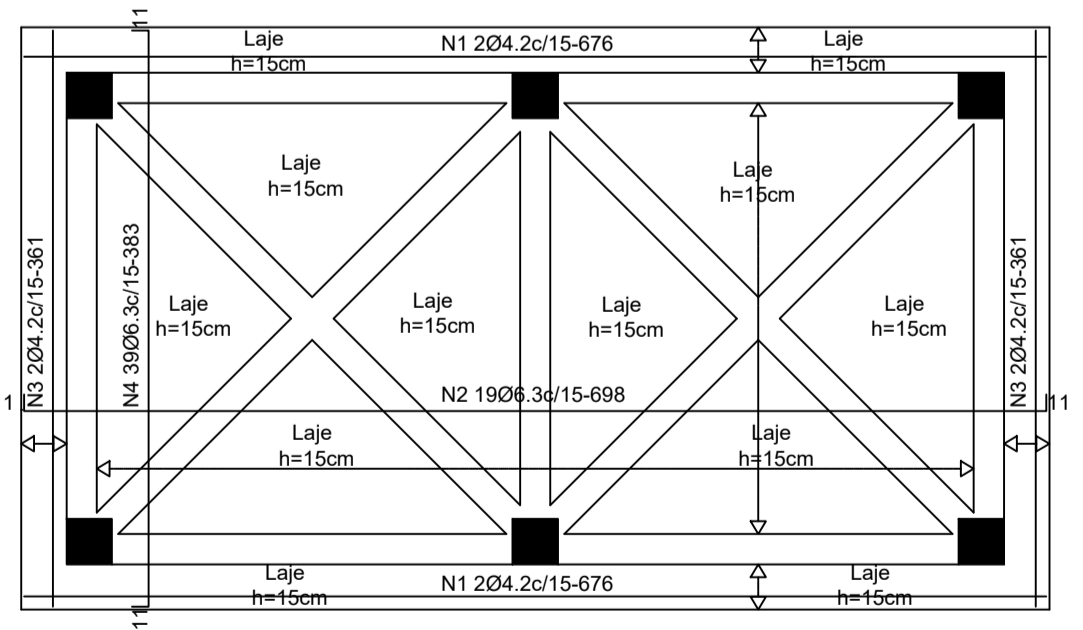
(x3)  
FORMA NIVEL 1, NIVEL 2 e NIVEL 3  
Esc:1/50



FORMA LAJE DE SUSTENTAÇÃO DA CX D'ÁGUA  
Esc:1/50



ARMADURA POSITIVA DA LAJE  
Esc:1/50



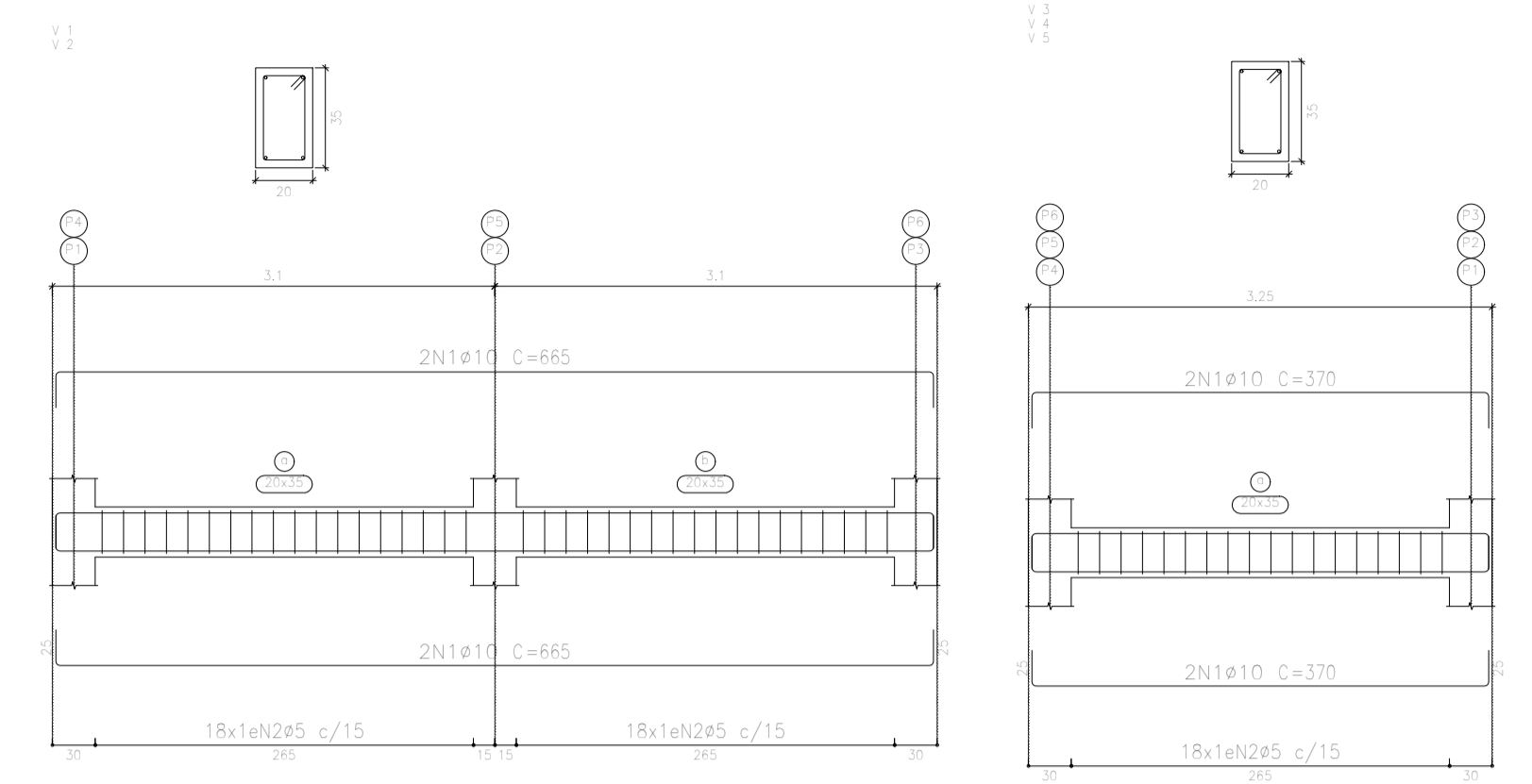
ARMADURA NEGATIVA DA LAJE  
Esc:1/50

NUM.	QNT.	Ø(MM)	COMP(M)	COMP TOTAL(M)	PESO (KG)	PESO+10% (KG)
1	04	4.2	6.76	27.08	2.98	3.28
2	23	6.3	6.76	155.48	38.87	42.76
3	04	4.2	3.61	14.44	1.59	1.75
3	47	6.3	3.61	169.67	42.42	46.66

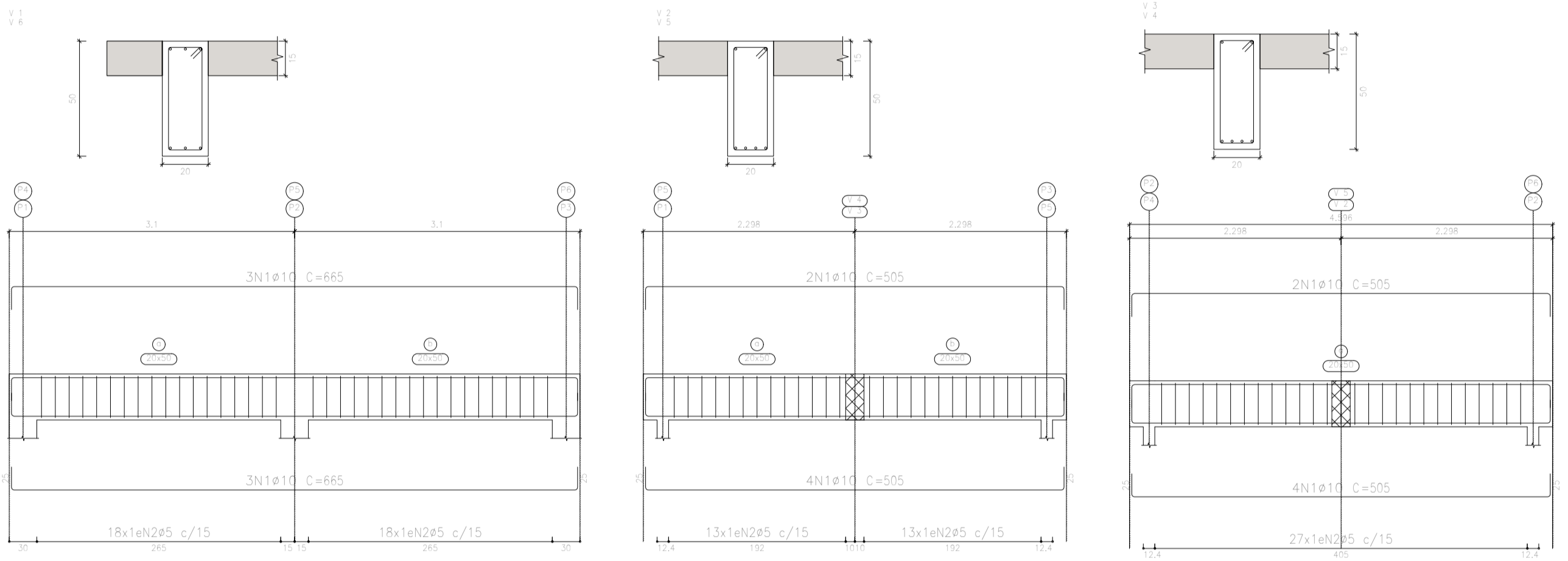
Volume de Concreto=2,86m³  
Área de forma=22,23m²  
Quantidade de Barras: 404.2-12,00 + 3005.0-12,00  
Fck=25Mpa  
Cobrimento=2cm

NUM.	QNT.	Ø(MM)	COMP(M)	COMP TOTAL(M)	PESO (KG)	PESO+10% (KG)
1	04	4.2	6.76	27.08	2.98	3.28
2	19	6.3	6.98	132.62	33.16	36.48
3	04	4.2	3.61	14.44	1.59	1.75
3	39	6.3	3.83	149.37	37.35	41.09

Quantidade de Barras: 404.2-12,00 + 3005.0-12,00  
Fck=25Mpa  
Cobrimento=2cm



DETALHE DE VIGAS NIVEL 1, 2 e 3  
Esc viga: 1/50  
Esc corte: 1/25



DETALHE DE VIGAS LAJE DE SUSTENTAÇÃO DA CX D'ÁGUA  
Esc viga: 1/50  
Esc corte: 1/25

Resumo Aço	Comp. total (m)	Peso+10% (kg)	Total
CA-50 Ø10	258,2	175	175
CA-60 Ø5	297,0	51	51
Total			226

Elemento	Pos.	Diam.	Q.	Esquema (cm)	Comp. (cm)	Total (cm)	CA-50 (kg)	CA-60 (kg)
V 1=V 2	1	Ø10	4	665	665	2660	16,4	
	2	Ø5	36		98	3528		5,5
	Total+10% (x2)						18,0	6,1
V 3=V 4=V 5	1	Ø10	4	370	370	1480	9,1	
	2	Ø5	18		98	1764		2,8
	Total+10% (x3)						10,0	3,1
					Ø5:	0,0	21,5	
					Ø10:	66,0	0,0	
					Total:	66,0	21,5	

Resumo Aço	Comp. total (m)	Peso+10% (kg)	Total
CA-50 Ø10	97,6	66	66
CA-60 Ø5	123,5	21	21
Total			87

NIVEL 1=NIVEL 2=NIVEL 3  
Fck=25Mpa

Elemento	Pos.	Diam.	Q.	Esquema (cm)	Comp. (cm)	Total (cm)	CA-50 (kg)	CA-60 (kg)
V 1=V R	1	Ø10	6	665	665	3990	24,6	
	2	Ø5	36		128	4608		7,2
	Total+10% (x2)						27,1	7,9
V 2=V 5	1	Ø10	6	505	505	3030	18,7	
	2	Ø5	26		128	3328		5,2
	Total+10% (x2)						20,6	5,7
V 3=V 4	1	Ø10	6	505	505	3030	18,7	
	2	Ø5	27		128	3456		5,4
	Total+10% (x2)						41,2	11,4
V 7=V 9	1	Ø10	2	370	370	1440	3,9	
	2	Ø10	3	370	1110	6,8		
	3	Ø5	18		128	2304		3,6
Total+10% (x2)						11,8	4,0	
V 8	1	Ø10	6	370	2220	13,7		
	2	Ø5	18		128	2304		3,6
	Total+10% (x2)						15,1	4,0
					Ø5:	0,0	51,0	
					Ø10:	175,3	0,0	
					Total:	175,3	51,0	

**CONVENÇÕES**

- ▣ PILAR QUE NASCE
- ▨ PILAR QUE SEGUE
- PILAR MORRE

**SISTEMA DE ABASTECIMENTO DE ÁGUA**  
END.: COMUNIDADE SANTA ROSA, ZONA RURAL DO MUNICÍPIO DE CAPANEMA/PA

**PROJETO ESTRUTURAL** DATA: junho | 2021  
ESC.: INDICADA  
DES.: WESLEN COSTA

WESLEN CRISTIAN AVIZ COSTA  
CREA Nº 151726942-7

PREFEITURA MUNICIPAL DE CAPANEMA  
CNPJ: 05.149.091/0001-45

ENDEREÇO:  
Rua João Pessoa nº 148  
Centro | Capanema | Pará | CEP  
68.700-020  
FONES:  
(91) 34625893

E-MAIL:  
secplanejamento2017@gmail.com

**CAPANEMA SEPLAN**

PRANCHA  
02